

MARINER

If you are not sure which size to choose, measure a similar garment at home and compare these measures to the garments measures below.

If you need other measures such as: longer sleeve, bigger waist etc. Pls send us an email at mtm@coloniaire.com and we are happy to help you out changing the measures you want and make one garment specially for you.

A: Body length

- place your garment flat on the floor with the chest facing down towards the floor. Measure the length from the bottom of the neck to where the garment ends.

B: Shoulder width

- place your garment flat on the floor with the chest facing down towards the floor. Measure the shoulder width from side to side

C: Chest width

- place your garment flat with the back facing down towards the floor. Take the measure 2 cm below the armpit. Measure from armpit to armpit

D: Waist width

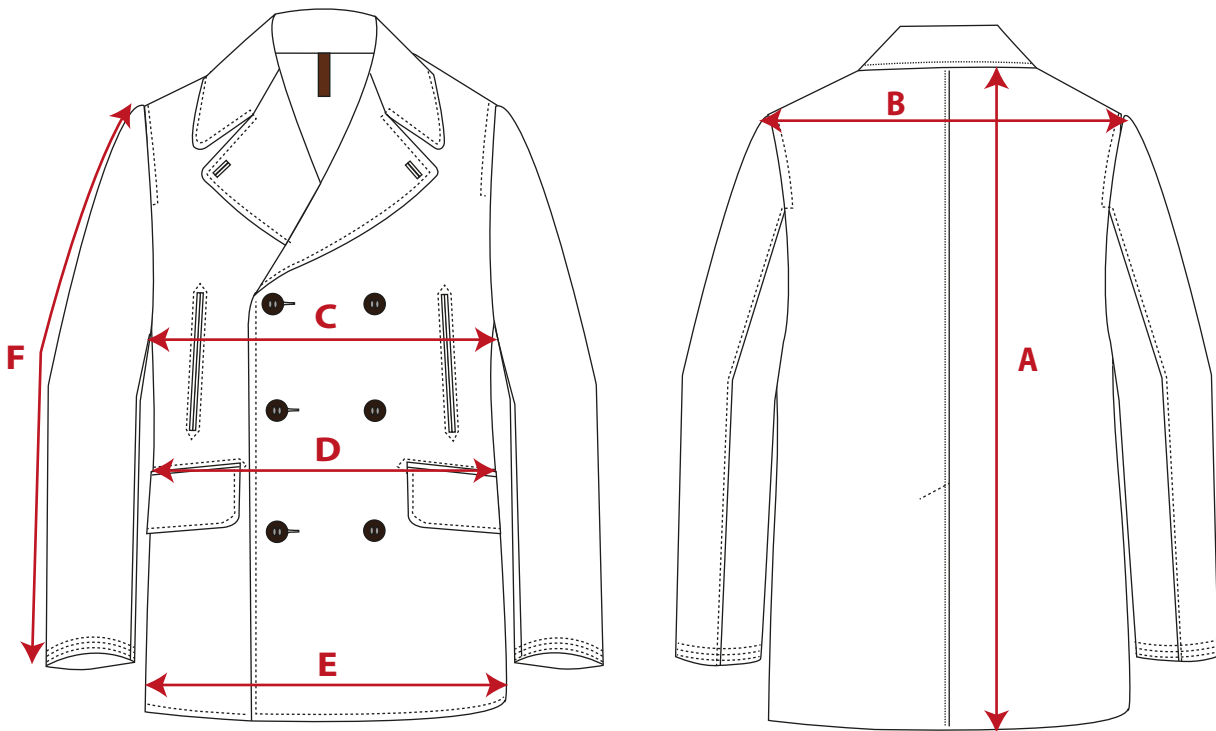
- place your garment flat with the back facing down towards the floor. Measure from edge to edge where the garment is at its narrowest. Around 18 cm below armpit

E: Bottom width

- place your garment flat with the back facing down towards the floor. Measure from edge to edge, 3 cm above the bottom end.

F: Sleeve lenght

- Measure from sleeve top to sleeve ending. If the garments has a cuff, include that in the measure. (cuff is included in our measurement chart below)



	XS	S	M	L	XL	XXL	3XL	4XL
European size	46	48	50	52	54	56	58	60
US / UK size	36	38	40	42	44	46	48	50
	cm	cm	cm	cm	cm	cm	cm	cm
A: Body Lenght	76	77	78	79	80	81	82	83
B: Shoulder width	46	47	48	49	50,5	52	53,5	55
C: Half Chest width	52	54	56	58	60,5	62	64,5	67
D: Half waist width	51	53	55	57	59,5	61	63,5	66
E: Half Bottom width	52	54	56	58	60,5	62	64,5	67
F: Sleeve Lenght	64	65	66	67	68	69	69	70

* If the garment's fit is different from what is normal, we write a recommendation that you should select a bigger or smaller size than normal.