

## LORD TWEED

If you are not sure which size to choose, measure a similar garment at home and compare these measures to the garments measures below.

If you need other measures such as: longer sleeve, bigger waist etc. Pls send us an email at [mtm@coloniaire.com](mailto:mtm@coloniaire.com) and we are happy to help you out changing the measures you want and make one garment specially for you.

### A: Body length

- place your garment flat on the floor with the chest facing down towards the floor. Measure the length from the bottom of the neck to where the garment ends.

### B: Shoulder width

- place your garment flat on the floor with the chest facing down towards the floor. Measure the shoulder width from side to side

### C: Chest width

- place your garment flat with the back facing down towards the floor. Take the measure 2 cm below the armpit. Measure from armpit to armpit

### D: Waist width

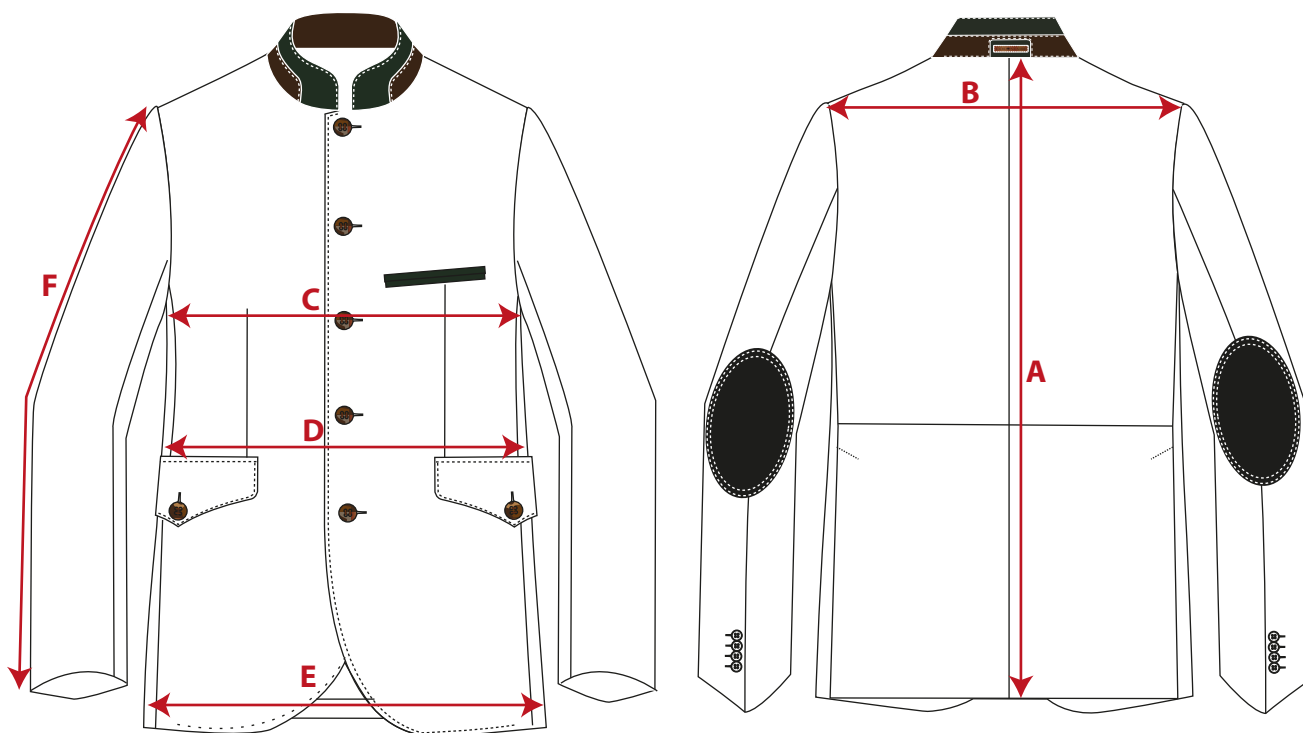
- place your garment flat with the back facing down towards the floor. Measure from edge to edge where the garment is at its narrowest. Around 18 cm below armpit

### E: Bottom width

- place your garment flat with the back facing down towards the floor. Measure from edge to edge, 3 cm above the bottom end.

### F: Sleeve length

- Measure from sleeve top to sleeve ending. If the garments has a cuff, include that in the measure. (cuff is included in our measurement chart below)



	XS	S	M	M/L	L	XL	XXL	XXXL
European size	44	46	48	50	52	54	56	58
US / UK size	34	36	38	40	42	44	46	48
	cm	cm	cm	cm	cm	cm	cm	cm
A: Body Length	72	73	74	75	76	77	78	79
B: Shoulder width	43,5	44,5	45,5	46,5	48	49,5	50,5	51,5
C: Half Chest width	48	50	52	54	56	58,5	61	63,5
D: Half waist width	46	48	50	52	54	56,5	59	61,5
E: Half Bottom width	49	51	53	55	57	59,5	62	64,5
F: Sleeve Length	64	64	65	66	67	68	69	69

\* If the garment's fit is different from what is normal, we write a recommendation that you should select a bigger or smaller size than normal.