

EARL TWEED

If you are not sure which size to choose, measure a similar garment at home and compare these measures to the garments measures below.
If you need other measures such as: longer legs, bigger waist etc. Pls send us an email at mtm@coloniaire.com and we are happy to help you out changing the measures you want and make one garment specially for you.

A: Leg length

- place your garment flat on the floor with the front side up. Measure the length from the crotch down to the end of leg.

B: Waist width

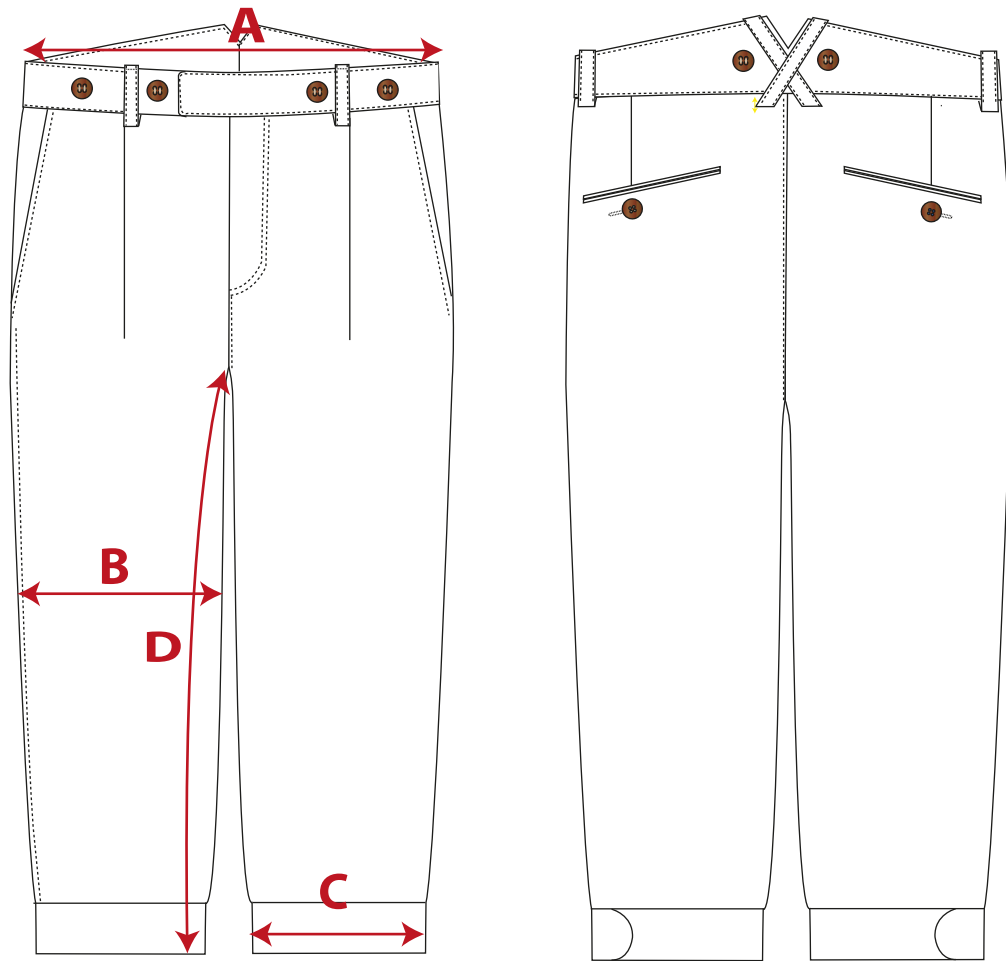
- place your garment flat on the floor with the front face up. Measure the waist from side to side

C: Knee width

- take the measure of the knee width around 35 cm below the crotch.

E: Bottom leg width

- measure the width of leg ending, Note! This hem/leg ending band is in knitted elastic rib.



	XS	S	M	M/L	L	XL	XXL	XXXL
European size	44	46	48	50	52	54	56	58
US inch	29	30	31	32	33	34	36	38
	cm	cm	cm	cm	cm	cm	cm	cm
A: Waist	39	41	43	45	47	49,5	52	54,5
B: Leg width (knee)	26,8	27,4	28	28,6	29,2	29,8	30,4	30
C: Leg width (end)	18	18,5	19	19,5	20	20,5	21	21,5
D: Leg lenght from crotch	46,5	47	47,5	48	48,5	49	50	51

* If the garment's fit is different from what is normal, we write a recommendation that you should select a bigger or smaller size than normal.