

# DESERT AVIATOR

If you are not sure which size to choose, measure a similar garment at home and compare these measures to the garments measures below.

If you need other measures such as: longer sleeve, bigger waist etc. Pls send us an email at [mtm@coloniaire.com](mailto:mtm@coloniaire.com) and we are happy to help you out changing the measures you want and make one garment specially for you.

## A: Body length

- place your garment flat on the floor with the chest facing down towards the floor. Measure the length from the bottom of the neck to where the garment ends.

## B: Shoulder width

- place your garment flat on the floor with the chest facing down towards the floor. Measure the shoulder width from side to side

## C: Chest width

- place your garment flat with the back facing down towards the floor. Take the measure 2 cm below the armpit. Measure from armpit to armpit

## D: Waist width

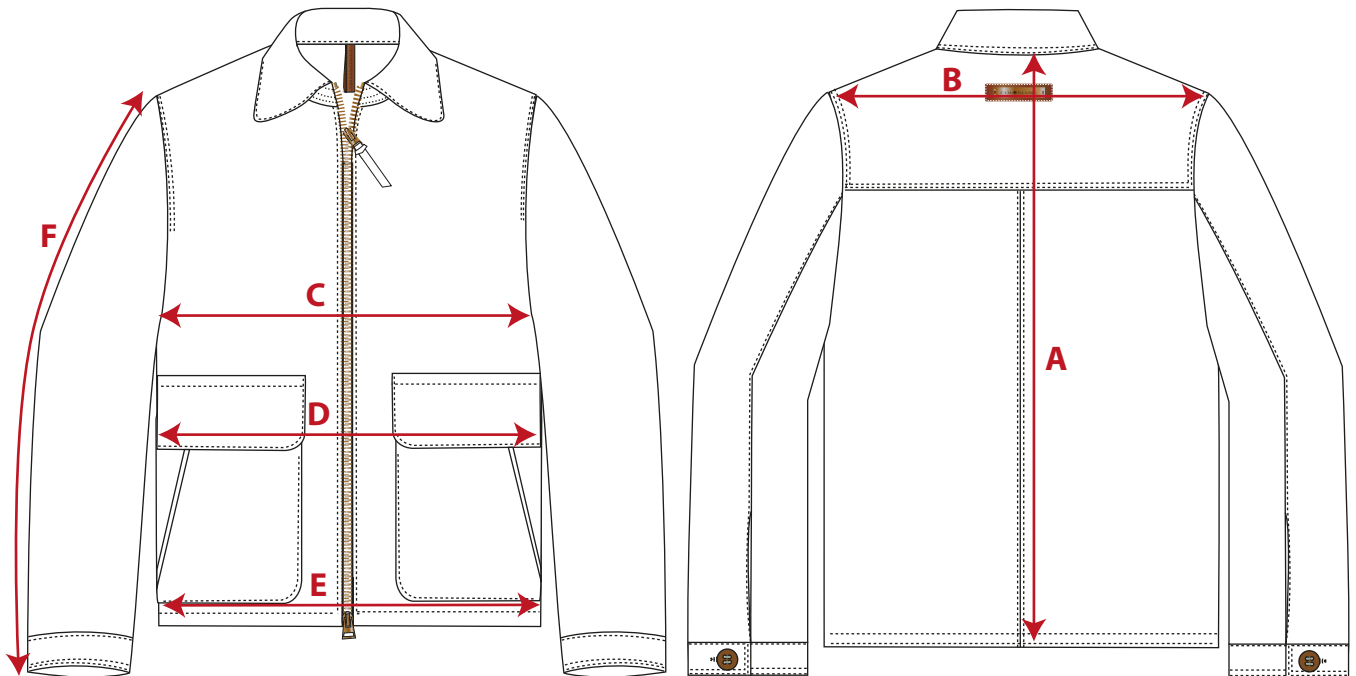
- place your garment flat with the back facing down towards the floor. Measure from edge to edge where the garment is at its narrowest. Around 18 cm below armpit

## E: Bottom width

- place your garment flat with the back facing down towards the floor. Measure from edge to edge, 3 cm above the bottom end.

## F: Sleeve length

- Measure from sleeve top to sleeve ending. If the garments has a cuff, include that in the measure. (cuff is included in our measurement chart below)



	XS	S	M	M/L	L	XL	XXL	XXXL
<b>European size</b>	44	46	48	50	52	54	56	58
<b>US / UK size</b>	34	36	38	40	42	44	46	48
	cm	cm	cm	cm	cm	cm	cm	cm
<b>A: Body Length</b>	63	64	65	66	67	68	69	70
<b>B: Shoulder width</b>	44	45	46	47	48	49,5	51	52,5
<b>C: Half Chest width</b>	50	52	54	56	58	60,5	63	65,5
<b>D: Half waist width</b>	48,5	50,5	52,5	54,5	56,5	59	61,5	64
<b>E: Half Bottom width</b>	49	51	53	55	57,5	60	62,5	65
<b>F: Sleeve Length</b>	64	64	65	66	67	68	69	69

\* If the garment's fit is different from what is normal, we write a recommendation that you should select a bigger or smaller size than normal.