

DAME TWEED

If you are not sure which size to choose, measure a similar garment at home and compare these measures to the garments measures below. If you need other measures such as: longer sleeve, bigger waist etc. Pls send us an email at mtm@coloniaire.com and we are happy to help you out changing the measures you want and make one garment specially for you.

A: Body length

- place your garment flat on the floor with the chest facing down towards the floor. Measure the length from the bottom of the neck to where the garment ends.

B: Shoulder width

- place your garment flat on the floor with the chest facing down towards the floor. Measure the shoulder width from side to side

C: Chest width

- place your garment flat with the back facing down towards the floor. Take the measure 2 cm below the armpit. Measure from armpit to armpit

D: Waist width

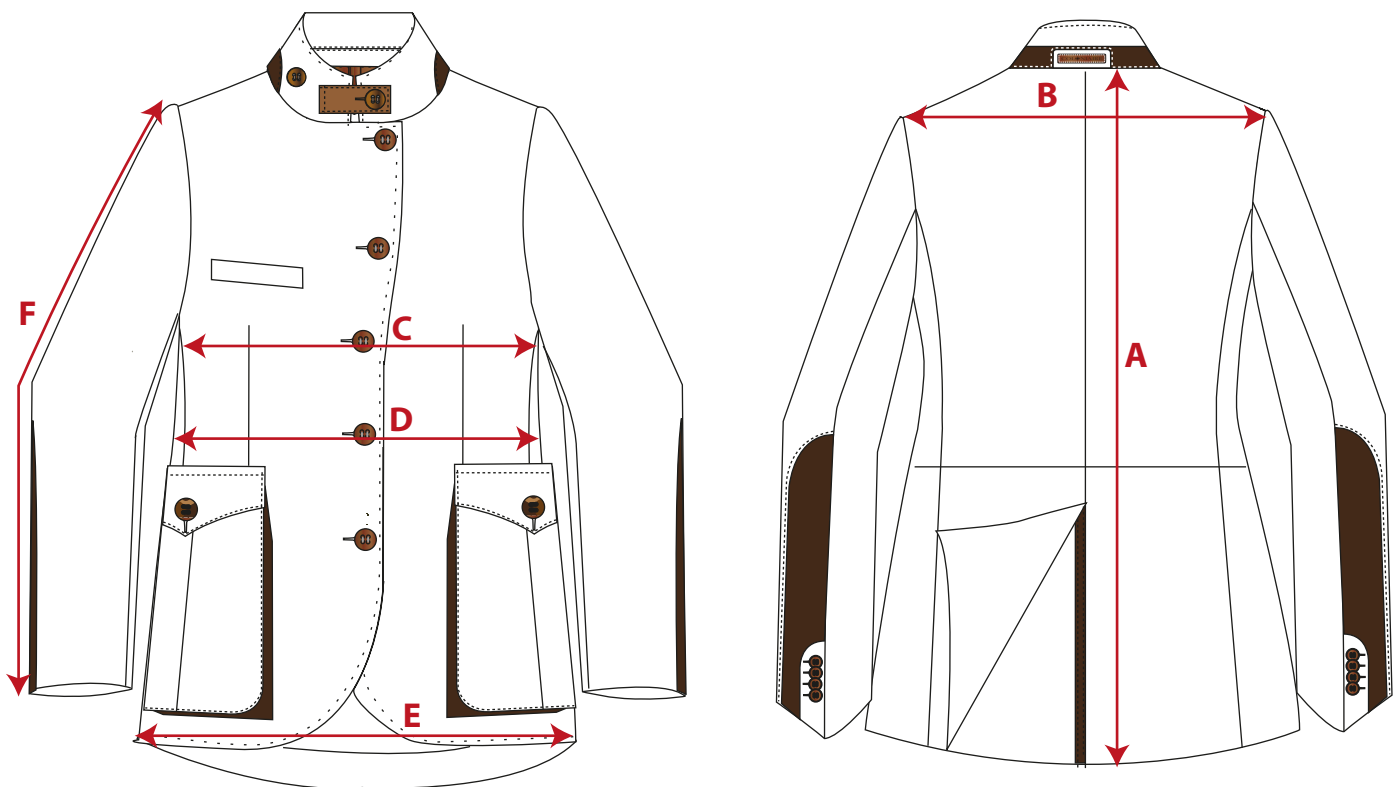
- place your garment flat with the back facing down towards the floor. Measure from edge to edge where the garment is at its narrowest. Around 18 cm below armpit

E: Hip/ Seat width

- place your garment flat with the back facing down towards the floor. Measure from edge to edge (side to side) 38 cm below armpit.

F: Sleeve length

- Measure from sleeve top to sleeve ending. If the garments has a cuff, include that in the measure. (cuff is included in our measurement chart below)



	XXS	XS	S	M	L	XL	XXL	XXXL
European size	32	34	36	38	40	42	44	46
US Size	2	4	6	8	10	12	14	16
	cm	cm	cm	cm	cm	cm	cm	cm
A: Body Length	71	72	73	74	74	75	75	75
B: Shoulder width	38	39	40,5	41,5	42,5	43,5	44,5	45,5
C: Half Chest width	43,3	45,3	47,3	49,3	51,3	55,3	56,3	58,3
D: Half waist width	39	41	44	46	48	50,5	53	55,5
E: Half Hip/Seat width	46	48	51	53	55	57,5	60	62,5
F: Sleeve Length	60	60,5	61	61,5	62	62,5	63	63

** If the garment's fit is different from what is normal, we write a recommendation that you should select a bigger or smaller size than normal.*