

# STROLLER

If you are not sure which size to choose, measure a similar garment at home and compare these measures to the garments measures below. If you need other measures such as: longer legs, bigger waist etc. Pls send us an email at [mtm@coloniaire.com](mailto:mtm@coloniaire.com) and we are happy to help you out changing the measures you want and make one garment specially for you.

## A: Leg length

- place your garment flat on the floor with the front side up. Measure the length from the crotch down to the end of leg.

## B: Waist width

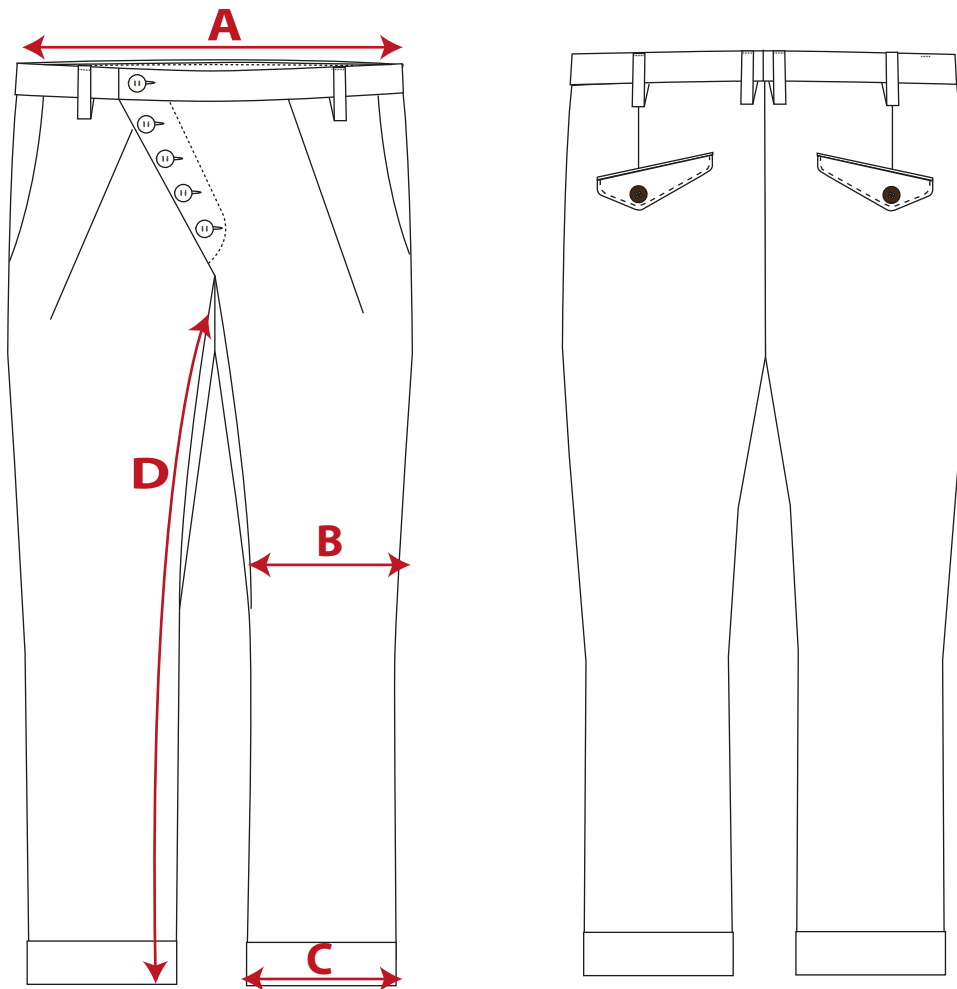
- place your garment flat on the floor with the front face up. Measure the waist from side to side

## C: Knee width

- take the measure of the knee width around 35 cm below the crotch.

## E: Bottom leg width

- measure the width of leg ending, Note! This hem/leg ending band is in knitted elastic rib.



	XS	S	M	L	XL	XXL	3XL	4XL
<b>European size</b>	46	48	50	52	54	56	58	60
<b>US inch</b>	30	31	32	33	34	36	38	40
	cm	cm	cm	cm	cm	cm	cm	cm
<b>A: Waist</b>	42	44	46	48	50,5	53	55,5	58
<b>B: Leg width (knee)</b>	19,5	20	20,5	21	21,5	22	22	22
<b>C: Leg width (end)</b>	19,5	20	20,5	21	21,5	22	22	22
<b>D: Leg length from crotch</b>	73	73	74	76	77	79	81	83

\* If the garment's fit is different from what is normal, we write a recommendation that you should select a bigger or smaller size than normal.