

## MARSHAL LADY

If you are not sure which size to choose, measure a similar garment at home and compare these measures to the garments measures below.

If you need other measures such as: longer sleeve, bigger waist etc. Pls send us an email at [mtm@coloniaire.com](mailto:mtm@coloniaire.com) and we are happy to help you out changing the measures you want and make one garment specially for you.

### A: Body length

- place your garment flat on the floor with the chest facing down towards the floor. Measure the length from the bottom of the neck to where the garment ends.

### B: Shoulder width

- place your garment flat on the floor with the chest facing down towards the floor. Measure the shoulder width from side to side

### C: Chest width

- place your garment flat with the back facing down towards the floor. Take the measure 2 cm below the armpit. Measure from armpit to armpit

### D: Waist width

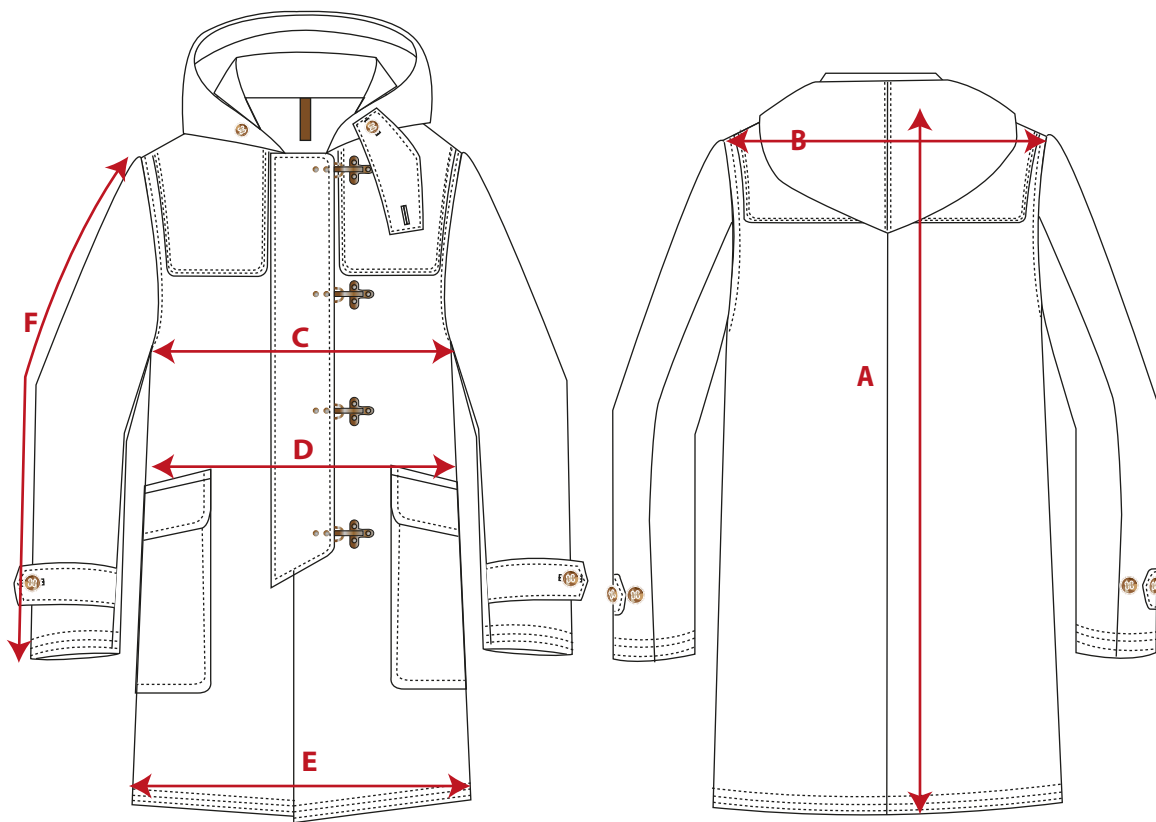
- place your garment flat with the back facing down towards the floor. Measure from edge to edge where the garment is at its narrowest. Around 18 cm below armpit

### E: Bottom width

- place your garment flat with the back facing down towards the floor. Measure from edge to edge, 3 cm above the bottom end.

### F: Sleeve length

- Measure from sleeve top to sleeve ending. If the garments has a cuff, include that in the measure. (cuff is included in our measurement chart below)



	XS	S	M	M/L	L	XL	XXL	XXXL
<b>European size</b>	34	36	38	40	42	44	46	
<b>US size</b>	4	6	8	10	12	14	16	
	cm	cm	cm	cm	cm	cm	cm	
<b>A: Body Length</b>	91	92	93	94	95	96	97	
<b>B: Shoulder width</b>	40	41	42	43	44	45	46	
<b>C: Half Chest width</b>	48,5	50,5	52,5	54,5	57	59,5	62	
<b>D: Half waist width</b>	49	51	53	55	58,5	60,5	63	
<b>E: Half Bottom width</b>	51	53	55	57	59,5	61,5	64,5	
<b>F: Sleeve Length</b>	61,5	62	62,5	63	63,5	64	64,5	

\* If the garment's fit is different from what is normal, we write a recommendation that you should select a bigger or smaller size than normal.