

COLONISATRICE

If you are not sure which size to choose, measure a similar garment at home and compare these measures to the garments measures below.

If you need other measures such as: longer sleeve, bigger waist etc. Pls send us an email at mtm@coloniaire.com and we are happy to help you out changing the measures you want and make one garment specially for you.

A: Body length

- place your garment flat on the floor with the chest facing down towards the floor. Measure the length from the bottom of the neck to where the garment ends.

B: Shoulder width

- place your garment flat on the floor with the chest facing down towards the floor. Measure the shoulder width from side to side

C: Chest width

- place your garment flat with the back facing down towards the floor. Take the measure 2 cm below the armpit. Measure from armpit to armpit

D: Waist width

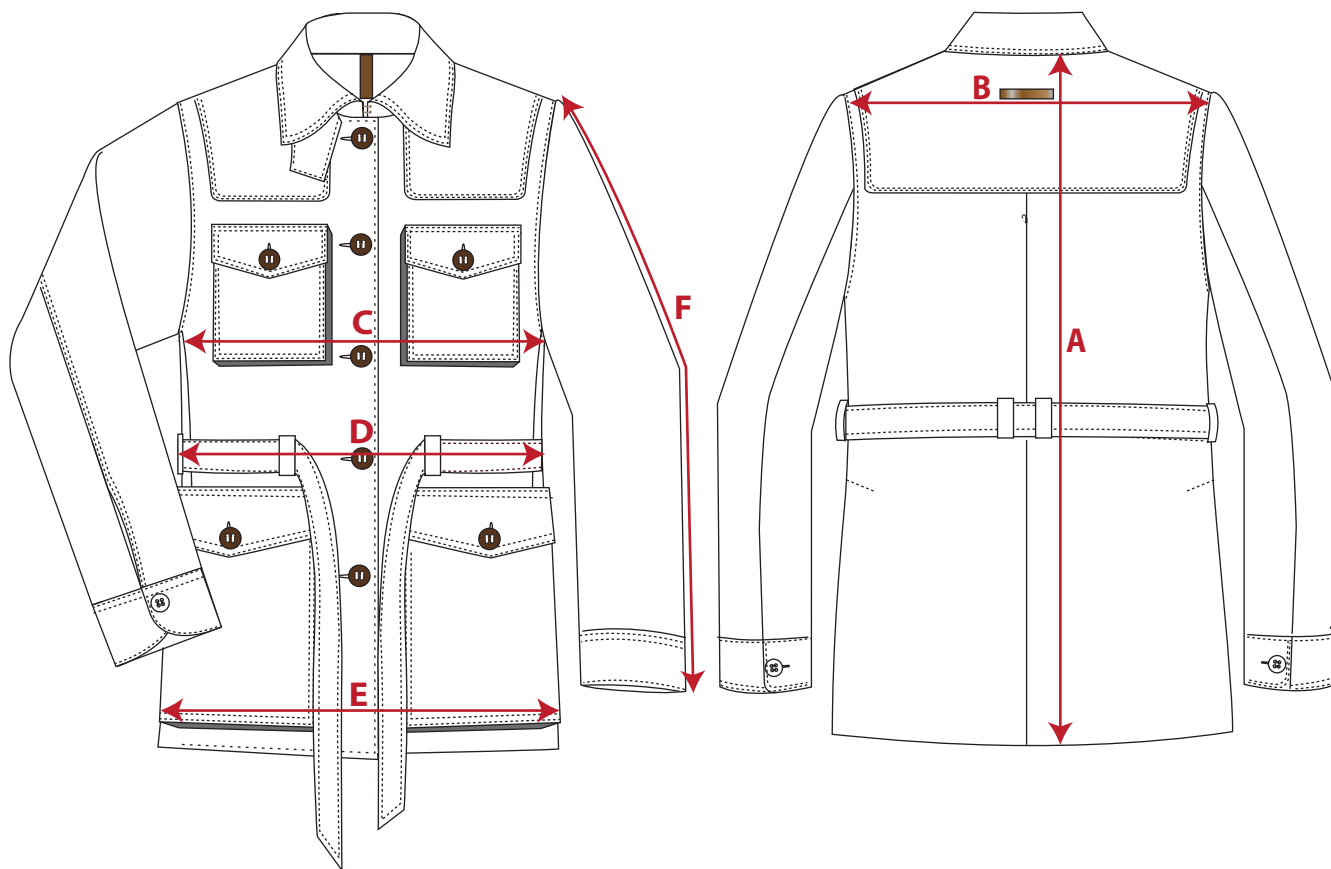
- place your garment flat with the back facing down towards the floor. Measure from edge to edge where the garment is at its narrowest. Around 18 cm below armpit

E: Bottom width

- place your garment flat with the back facing down towards the floor. Measure from edge to edge at bottom of garment.

F: Sleeve length

- Measure from sleeve top to sleeve ending. If the garments has a cuff, include that in the measure. (cuff is included in our measurement chart below)



	XXS		XS		S		M		L		XL		XXL		XXXL	
European size	32		34		36		38		40		42		44		46	
US size	2		4		6		8		10		12		14		16	
	cm	inch	cm	inch	cm	inch	cm	inch	cm	inch	cm	inch	cm	inch	cm	inch
A: Body Length	68	27,2	69	27,6	70	28	71	28,4	72	28,8	73	29,2	73	29,2	73	29,2
B: Shoulder width	38	14,8	39	15,6	40	16	41	16,4	42	16,8	43	17,2	44	17,6	45	18
C: Half Chest width	42	16,8	44	17,6	46	18,4	48	19,2	50	20	52	20,8	54	21,6	56	22,4
D: Half waist width	40	16	42	16,8	44	17,6	46	18,4	48	19,2	50	20	52	20,8	54	21,6
E: Half Hip/Seat width	44,5	17,8	46,5	18,6	48,5	19,4	50,5	20,2	52,5	21	54,5	21,8	56,5	22,6	58	23,2
F: Sleeve Length	58	23,2	59	23,6	60	24	61	24,4	62	24,8	63	25,2	64	25,6	64	25,6

** If the garment's fit is different from what is normal, we write a recommendation that you should select a bigger or smaller size than normal.*