

# TRAVAILLEUR LADY

If you are not sure which size to choose, measure a similar garment at home and compare these measures to the garments measures below.

If you need other measures such as: longer sleeve, bigger waist etc. Pls send us an email at [mtm@coloniaire.com](mailto:mtm@coloniaire.com) and we are happy to help you out changing the measures you want and make one garment specially for you.

## A: Body length

- place your garment flat on the floor with the chest facing down towards the floor. Measure the length from the bottom of the neck to where the garment ends.

## B: Shoulder width

- place your garment flat on the floor with the chest facing down towards the floor. Measure the shoulder width from side to side

## C: Chest width

- place your garment flat with the back facing down towards the floor. Take the measure 2 cm below the armpit. Measure from armpit to armpit

## D: Waist width

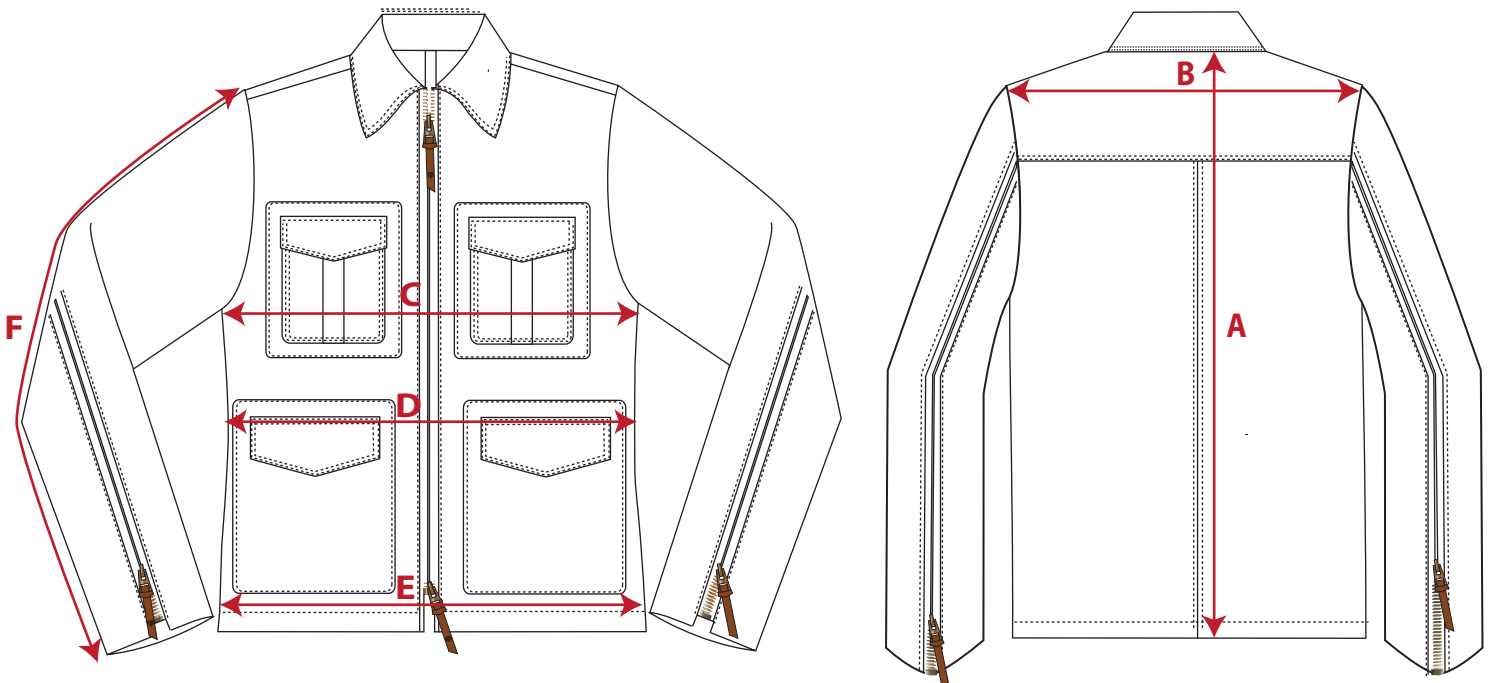
- place your garment flat with the back facing down towards the floor. Measure from edge to edge where the garment is at its narrowest. Around 18 cm below armpit

## E: Bottom width

- place your garment flat with the back facing down towards the floor. Measure from edge to edge at bottom of garment.

## F: Sleeve length

- Measure from sleeve top to sleeve ending. If the garments has a cuff, include that in the measure. (cuff is included in our measurement chart below)



	XXS		XS		S		M		L		XL		XXL		XXXL	
<b>European size</b>	32		34		36		38		40		42		44		46	
<b>US size</b>	2		4		6		8		10		12		14		16	
	cm	inch	cm	inch	cm	inch	cm	inch	cm	inch	cm	inch	cm	inch		
<b>A: Body Length</b>	52	20,8	53	21,2	54	21,6	55	22	56	22,4	57	22,8	57	22,8	57	22,8
<b>B: Shoulder width</b>	37	14,8	38	15,5	39	15,6	40	16	41	16,4	42	16,8	43	17,2	44	17,6
<b>C: Half Chest width</b>	39,5	15,8	41,5	16,6	43,5	17,4	45,5	18,2	47,5	19	49,5	19,8	51,5	20,6	53,5	21,4
<b>D: Half waist width</b>	37,5	15	39,5	15,8	41,5	16,6	43,5	17,4	45,5	18,2	47,5	19	49,5	19,8	51,5	20,6
<b>E: Half Bottom</b>	39,5	15,8	41,5	16,6	43,5	17,4	45,5	18,2	47,5	19	49,5	19,8	51,5	20,6	53,5	21,4
<b>F: Sleeve Length</b>	59	23,6	60	24	61	24,4	62	24,8	63	25,2	64	25,6	65	26	66	26,4

\* If the garment's fit is different from what is normal, we write a recommendation that you should select a bigger or smaller size than normal.