

SPY

If you are not sure which size to choose, measure a similar garment at home and compare these measures to the garments measures below. If you need other measures such as: longer sleeve, bigger waist etc. Pls send us an email at mtm@coloniaire.com and we are happy to help you out changing the measures you want and make one garment specially for you.

A: Body length

- place your garment flat on the floor with the chest facing down towards the floor. Measure the length from the bottom of the neck to where the garment ends.

B: Shoulder width

- place your garment flat on the floor with the chest facing down towards the floor. Measure the shoulder width from side to side

C: Chest width

- place your garment flat with the back facing down towards the floor. Take the measure 2 cm below the armpit. Measure from armpit to armpit

D: Waist width

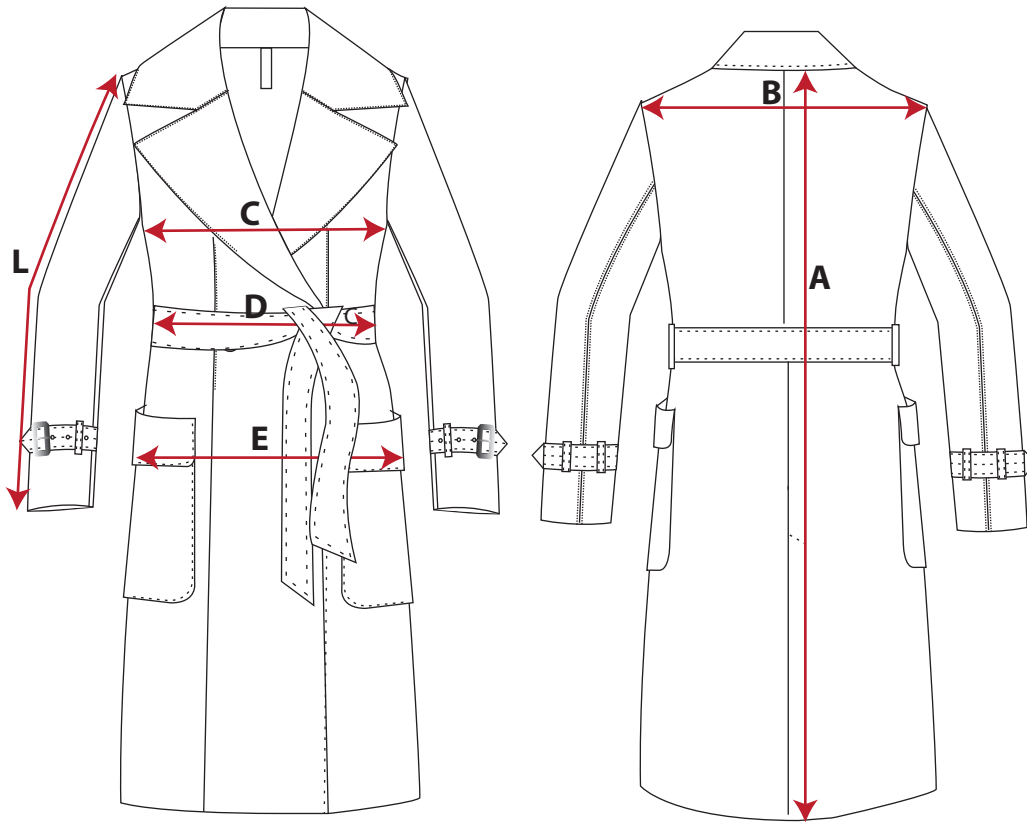
- place your garment flat with the back facing down towards the floor. Measure from edge to edge where the garment is at its narrowest. Around 18 cm below armpit

E: Hip/ Seat width

- place your garment flat with the back facing down towards the floor. Measure from edge to edge (side to side) 38 cm below armpit.

F: Sleeve length

- Measure from sleeve top to sleeve ending. If the garments has a cuff, include that in the measure. (cuff is included in our measurement chart below)



	XXS		XS		S		M		L		XL		XXL		XXXL	
European size	32		34		36		38		40		42		44		46	
US size	2		4		6		8		10		12		14		16	
	cm	inch	cm	inch	cm	inch	cm	inch	cm	inch	cm	inch	cm	inch		
A: Body Length	107	42,4	108	43,2	110	44	111	44,4	112	44,8	113	45,2	113	45,2	113	45,2
B: Shoulder width	38	14,8	39	15,6	40	16	41	16,4	42	16,8	43	17,2	44	17,6	45	18
C: Half Chest width	40,5	16,2	42,5	17	44,5	17,8	46,5	18,6	48,5	19,4	50,5	20,2	52,5	21	54,5	21,8
D: Half waist width	37,5	15	39,5	15,8	41,5	16,6	43,5	17,4	45,5	18,2	47,5	19	49,5	19,8	51,5	20,6
E: Half Hip/Seat width	44	17,6	46	18,4	48	19,2	50	20	52	20,8	54	21,6	56	22,4	58	23,2
F: Sleeve Length	60	24	61	24,4	62	24,8	63	25,2	64	25,6	65	26	66	26,4	66	26,4

* If the garment's fit is different from what is normal, we write a recommendation that you should select a bigger or smaller size than normal.