

COLONISATEUR

If you are not sure which size to choose, measure a similar garment at home and compare these measures to the garments measures below.

If you need other measures such as: longer sleeve, bigger waist etc. Pls send us an email at mtm@coloniaire.com and we are happy to help you out changing the measures you want and make one garment specially for you.

A: Body length

- place your garment flat on the floor with the chest facing down towards the floor. Measure the length from the bottom of the neck to where the garment ends.

B: Shoulder width

- place your garment flat on the floor with the chest facing down towards the floor. Measure the shoulder width from side to side

C: Chest width

- place your garment flat with the back facing down towards the floor. Take the measure 2 cm below the armpit. Measure from armpit to armpit

D: Waist width

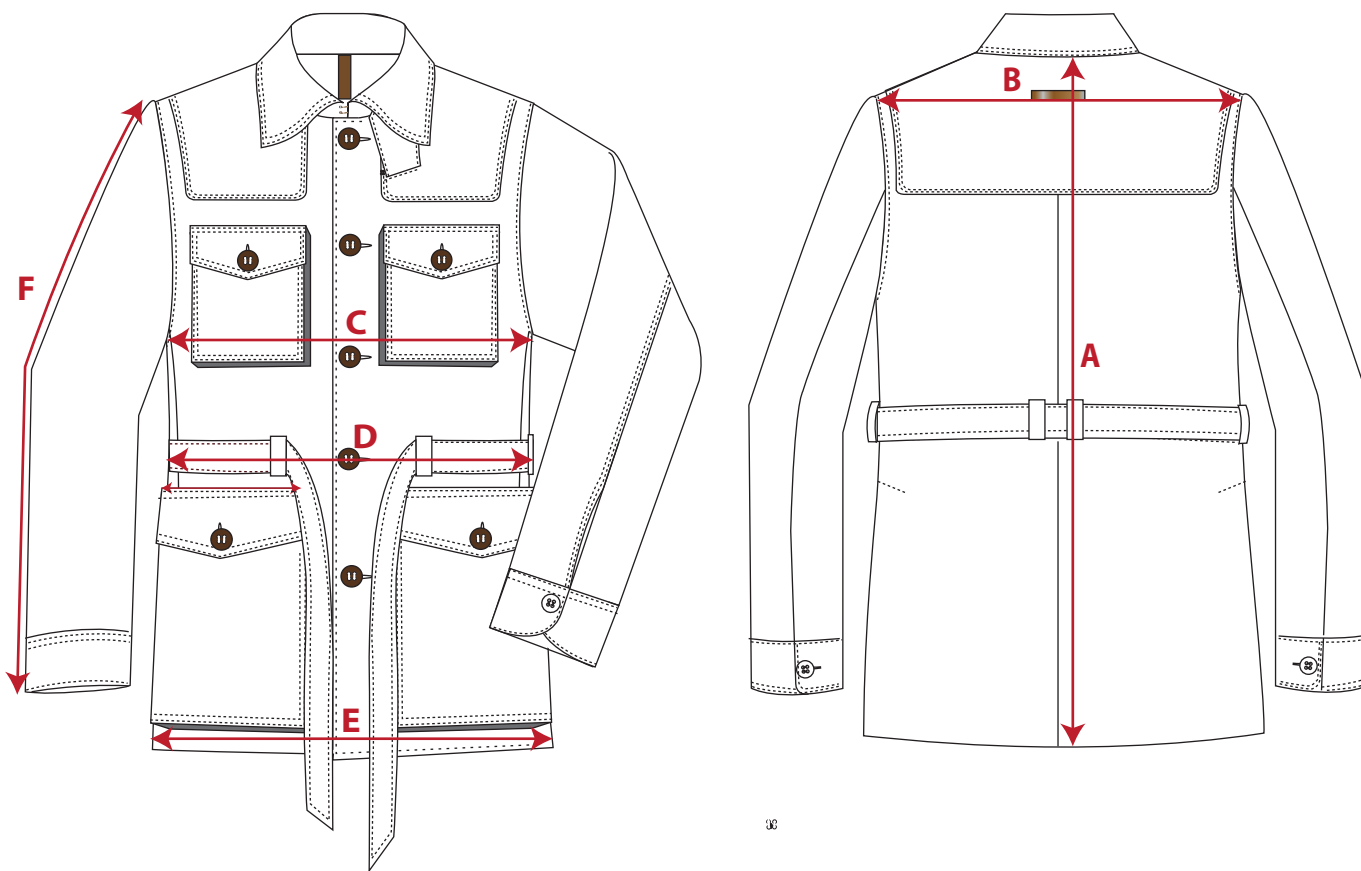
- place your garment flat with the back facing down towards the floor. Measure from edge to edge where the garment is at its narrowest. Around 18 cm below armpit

E: Bottom width

- place your garment flat with the back facing down towards the floor. Measure from edge to edge, 3 cm above the bottom end.

F: Sleeve length

- Measure from sleeve top to sleeve ending. If the garments has a cuff, include that in the measure. (cuff is included in our measurement chart below)



	XS		S		M		M/L		L		XL		XXL		XXXL	
European size	44		46		48		50		52		54		56		58	
US / UK size	34		36		38		40		42		44		46		48	
	cm	inch	cm	inch	cm	inch	cm	inch	cm	inch	cm	inch	cm	inch	cm	inch
A: Body Length			74	29,6	75	30	76	30,4	77	30,8	78	31,2	79	31,6	80	32
B: Shoulder width			45	18	46	18,4	47	18,8	48	19,2	49	19,6	50	20	51	20,4
C: Half Chest width			52	20,8	54	21,6	56	22,4	58	23,2	60	24	62	24,8	64	25,6
D: Half waist width			52	20,8	54	21,6	56	22,4	58	23,2	60	24	62	24,8	64	25,6
E: Half Bottom width			52	20,8	54	21,6	56	22,4	58	23,2	60	24	62	24,8	64	25,6
F: Sleeve Length			63	25,2	64	25,6	65	26	66	26,4	67	26,8	68	27,2	68	27,6

* If the garment's fit is different from what is normal, we write a recommendation that you should select a bigger or smaller size than normal.