

# ARTISAN

If you are not sure which size to choose, measure a similar garment at home and compare these measures to the garments measures below.

If you need other measures such as: longer sleeve, bigger waist etc. Pls send us an email at [mtm@coloniaire.com](mailto:mtm@coloniaire.com) and we are happy to help you out changing the measures you want and make one garment specially for you.

## A: Body length

- place your garment flat on the floor with the chest facing down towards the floor. Measure the length from the bottom of the neck to where the garment ends.

## B: Shoulder width

- place your garment flat on the floor with the chest facing down towards the floor. Measure the shoulder width from side to side

## C: Chest width

- place your garment flat with the back facing down towards the floor. Take the measure 2 cm below the armpit. Measure from armpit to armpit

## D: Waist width

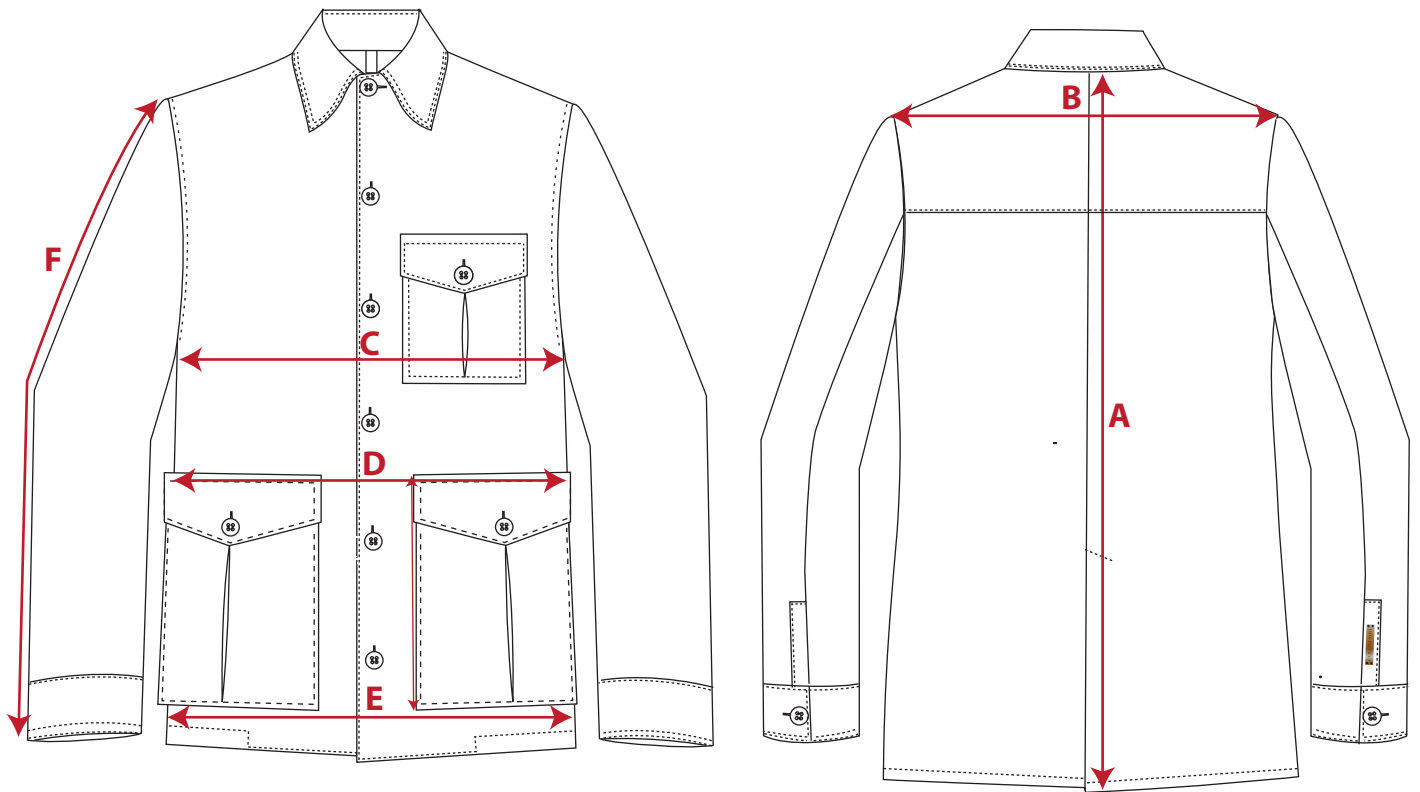
- place your garment flat with the back facing down towards the floor. Measure from edge to edge where the garment is at its narrowest. Around 18 cm below armpit

## E: Bottom width

- place your garment flat with the back facing down towards the floor. Measure from edge to edge, 3 cm above the bottom end.

## F: Sleeve length

- Measure from sleeve top to sleeve ending. If the garments has a cuff, include that in the measure. (cuff is included in our measurement chart below)



	XS		S		M		M/L		L		XL		XXL		XXXL	
European size	44		46		48		50		52		54		56		58	
US / UK size	34		36		38		40		42		44		46		48	
	cm	inch	cm	inch	cm	inch	cm	inch	cm	inch	cm	inch	cm	inch	cm	inch
A: Body Length			70	28	71	28,4	72	28,8	73	29,2	74	29,6	75	30	76	30,4
B: Shoulder width			44,5	17,8	45,5	18	46,5	18,6	47,5	19	48,5	19,4	49,5	19,8	50	20
C: Half Chest width			49,5	19,8	51,5	20,6	53,5	21,4	55,5	22,2	58	23,2	60,5	24,2	63	25,2
D: Half waist width			47,5	19	49,5	19,8	51,5	20,6	53,5	21,4	56	22,4	58,5	23,4	61	24,4
E: Half Bottom width			49,5	19,8	51,5	20,6	53,5	21,4	55,5	22,2	58	23,2	60,5	24,2	63	25,2
F: Sleeve Length			64	25,6	65	26	66	26,4	67	26,8	68	27,2	69	27,6	69	27,6

\* If the garment's fit is different from what is normal, we write a recommendation that you should select a bigger or smaller size than normal.